

# Estate Farm Equipment

35980 267th St.,  
Platte, SD 57369

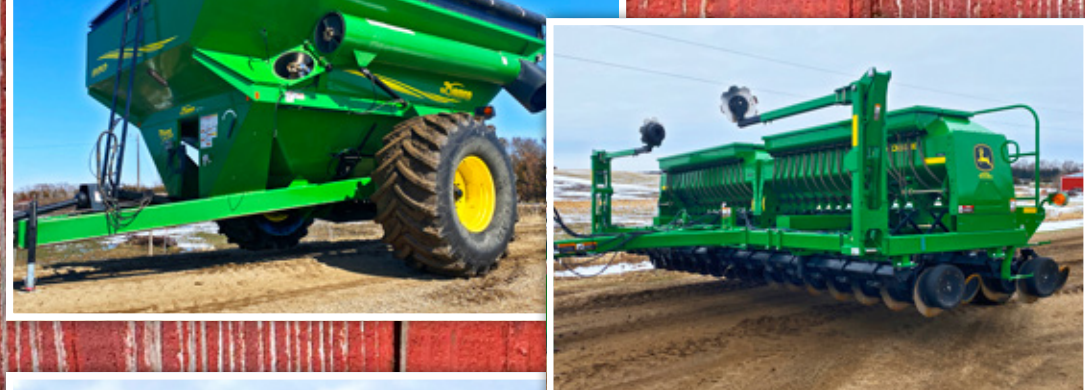
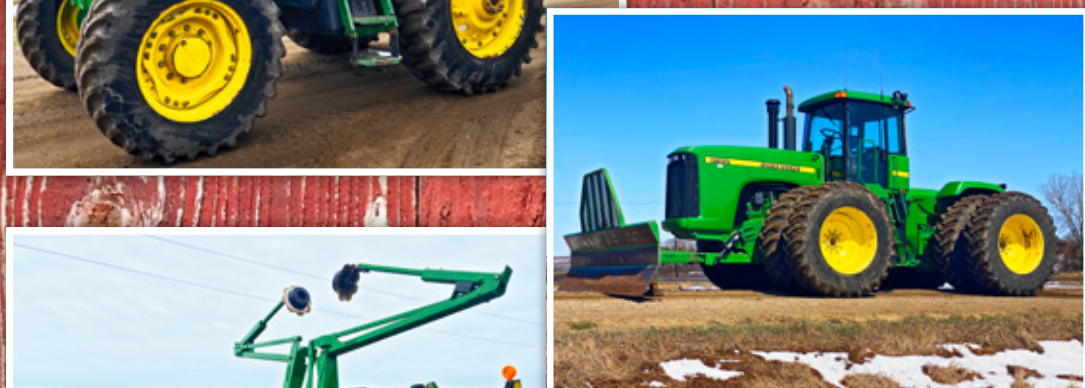
# AUCTION

TIMED ONLINE

OPENS: Wednesday, April 7

**CLOSES: WEDNESDAY, APRIL 14 | 10AM** 2021

PREVIEW: Thursday, April 1 - Wednesday, April 14 by appointment | **LOADOUT:** By appointment, must be completed by Wednesday, April 21



## TRACTORS & LOADERS

**1998 John Deere 9100**, active seat, 12 spd. gear, 4 hyd., 3 pt., quick hitch, 1000 PTO, Outback S guidance, hammerstrap, 20.8R38 tires, 2,984 hrs., S/NRW9100S010151

**2013 John Deere 6170R**, MFWD, deluxe cab, AutoQuad Plus Eco 20/20, LH reverser, 3 hyd., 3 pt., 540/1000 PTO, GS3 7" integrated display, integrated AutoTrac, cold weather pkg., deluxe light pkg., fender 3 pt. controls, diff lock, front fenders, front weights, inside rear wheel weights, 420/90R30 front tires, 480/80R46 rear tires, 6,620 hrs., S/N1RW6170RACA002596

**2013 John Deere 6170R**, MFWD, premium cab, AutoQuad Plus Eco20/20, LH reverser, TLS front susp., 4 hyd., 3 pt., quick hitch, 540E/1000/1000E PTO, integrated AutoTrac, GS3 7" integrated display, diff lock, electric mirrors, panorama glass roof, deluxe light kit, aux. hyd., John Deere 660R loader, 96" bucket w/5-tine grapple, dual fender controls, front weight bracket, rear wheel weights, 16.9R30 front tires, 18.4R46 rear duals, 1,932 hrs., S/N1RW6170RTDA009024

**2012 John Deere 7230**, MFWD, LH/RH doors, AutoQuad Plus 24 spd., LH reverser, 4 hyd., 3 pt., top link, 540/1000 PTO, GreenStar ready, 7" integrated display, diff lock, block heater, joystick control, John Deere 741 self-leveling loader, 7 bucket w/5-tine grapple, rear fender controls, front weight bracket, inside rear weights, 14.9R28 front tires, 18.4R38 rear tires, 2,637 hrs., S/NRW7230K030156

**2001 John Deere 7610**, MFWD, PowrQuad 20 spd., 3 hyd., 3 pt., 540/1000 PTO, joystick controls, John Deere 740 loader, aux. hyd., 7" quick attach bucket w/4-prong grapple, diff lock, cold weather pkg., fender controls, inside rear weights, 16.9R28 front tires, 18.4R42 rear tires, 5,282 hrs., S/NRW7610H058706

**2005 John Deere 7820**, MFWD, CAH, PowrQuad 20 spd., LH reverser, 4 hyd., 3 pt., quick hitch, 540/1000/1000 PTO, integrated AutoTrac, fender 3 pt. controls, diff lock, ground speed radar, block heater, front weights, inside rear weights, B-clamp on duals, 380/85R30 front tires, 480/80R42 rear tires, 4,586 hrs., S/NRW7820R031264

**2000 John Deere 7210**, MFWD, CAH, PowrQuad 16 spd., 3 hyd., 3 pt., 540/1000 PTO, diff lock, quick hitch, block heater, 14.9R28 front tires, 18.4-38 rear tires, 12,933 engine hrs., S/NRW7210H034634

**John Deere 630**, wide front, gas, power steering, 3 pt., 540 PTO, rear fenders, not running

## WHEEL LOADERS & ATTACHMENTS

**2018 Caterpillar 926M** wheel loader, high lift, aux. hyd., ride control, hyd. quick attach, 99" bucket, rear view camera, 20.5-25 tires, 1,138 hrs., S/NCAT0926MLLTE05400

**Pallet forks**, 42", CAT wheel loader mount

**Bale spear**, 4-tine, CAT wheel loader mount

**2010 Volvo L60F** wheel loader, ride control, 102" bucket w/Grabtec 4-tine grapple, aux. hyd., rear view camera, 20.5R25 tires, 5,654 hrs., S/NVCE0160FH00071353

**Meyerink Farm Service 3612** snow pusher, 12', Volvo wheel loader mount

**Volvo 80108** pallet forks, 60", Volvo wheel loader mount, S/N330951965

**Bale spear**, 10', 4-tine, Volvo wheel loader mount

## EXCAVATOR & ATTACHMENT

**2015 JCB 8045 ZTS** mini excavator, Perkins 4 cyl. diesel, 22" bucket, hyd. thumb, aux. hyd., 78" push blade, 16" rubber tracks, 389 hrs., S/N2490

**Excavator bucket**, 17", off JCB, S/N8045 ZTS

## HAY EQUIPMENT

**2020 John Deere 560M** round baler, MegaWide pickup, hyd. pickup lift, variable core, Cover-Edge, twine & net wrap, push bar, monitor, digital moisture tester, small 1000 PTO, 21.5L-16.15L tires, 2,380 bales, S/N1E0560MDCLL466046

**2017 Challenger WR9860** self-propelled mower conditioner, hydrostatic drive, 16' Challenger RazorBar discbine head, AGCO AutoGuide 3000 display, TopCon receiver, steel roller conditioners, rear suspension, 23.1R26 front tires, 16.5L-16.1 rear tires, 674 cutting hrs., 824 engine hrs., S/NAGCC9860FHS12646

## HAY EQUIPMENT

**2015 Vermeer R2800** hyd. rake, hyd. fold, hyd. windrow adj., remote, 11L-15 tires, S/N1VRV25161F1012144

**H&S Columbia TR79** side delivery rake, 9-wheel, LH delivery

**Rowse dump rake**, 40', hyd. lift

**Rolin Mfg hyd. bale mover**, 15'x28', dual tandems, 235/85R16 tires

**Bale fork**, 2-prong, 3 pt.

**4-spear bale fork**, 10', John Deere Euro loader mount

**2-spear bale fork**, John Deere loader mount

**Asst. baler twine & net wrap**

## FORAGE EQUIPMENT

**2020 Penta 5030** vertical TMR mixer, RH fold down apron discharge, 48" apron ext., stainless steel, apron magnet, (2) Digi-Star RD-2500V front & left side scales, 540 PTO, 560/45R22.5 tires, S/N5030201964

**2016 Bridgeview Mfg Bale King 5100** bale processor, RH delivery, rear self-loading, diff. feed rollers, small 1000 PTO, S/NBK6798

**Kuhn Knight 3142** Reel Auggie mixer feed wagon, 36" hyd. chute, LH delivery, Avery Weigh-Tronix 640XL scale, small 1000 PTO, 385/65R22.5 tires, S/NB0283

**OMC 450** Ram grinder/mixer, 540 PTO

**Renn RMC 24** roller mill, 24"x16" roll, 10"x8" elevator discharge, 540 PTO, S/NR990486

## COMBINE

**2008 John Deere 9670**, 2WD, STS, premium cab, Contour-Master, deluxe controls, bullet rotor, Command Center, reverser, variable sp. feeder house, HD final drives, Maurer hopper ext., 22-1/2 high cap. unloading auger, fine cut chopper, round bar concaves, block heater, single pt. hookup, rock trap, power tailboard, HD adj. rear axle, 480/85R26 rear tires, 520/85R38 duals, 1,005 sep. hrs., 1,535 engine hrs., S/NH09670S727122

## GPS EQUIPMENT

**John Deere 2600** display, SF1, S/NPCRM26E137839

**John Deere 2600** display, SF2, S/NPCGU266161685

**John Deere 2630** display, SF2, S/NPCGU2UK691575

**(3) John Deere StarFire 3000** receivers, SF1, S/N1719472, S/N18999, S/N13544

**John Deere StarFire 3000** receiver, SF1, SF2 ready, S/N338891

## HEADS & HEADER TRAILER

**2011 John Deere 630F** flex head, full finger reel, CWS air bar, single knife drive, full finger auger, full poly, stubble lights, single pt. hookup, S/N1H00630FE0740985

**2007 John Deere 893** corn head, 8x30", hyd. deck plates, poly snouts, AFH, double drives, stubble lights, knife rolls, S/NH00893X720501

**1984 John Deere 212** pickup head, 6-belt pickup, S/NH00212X600092

**Horst CHC header trailer**, 30', ST235/85R16 tires, S/N1610097

## GRAIN CART & GRAVITY BOXES

**2005 Demco 950** grain cart, Posi Flow, 18" discharge hyd. fold auger, Avery Weigh-Tronix 640 scale, front/rear lights, cleanout door, 1000 PTO, 900/60R32 tires, S/N40060

**Dakon 250** gravity box, RH delivery, Electric 5026 4-wheel running gear, adj. hitch, 11L-15 tires on 6-bolt rims, S/NJ487357

**Dakon 150** gravity box, LH delivery, Electric 5026 4-wheel running gear, adj. hitch, 11L-15 tires on 6-bolt rims, S/NJ507784

## DRILL & PLANTER

**2013 John Deere 1590** press drill, 20', 7-1/2" space, grass seeder, single shoot, hyd. markers, agitator, 2 pt., hyd. down pressure, steel closing wheels, ground drive, S/N1N01590XED0750574

**2009 John Deere 1760** planter, 12x30", MaxEmerge XP units, Pro-Shaft drive, 3 bu. boxes, Tru-Vee openers, Yetter adj. trash

## DRILL & PLANTER

whippers, MudSmith gauge wheels, steel closing wheels, hyd. markers, HD down force springs, John Deere 350 monitor, half-width disconnect, ground drive, ProMAX 40 soybean & sorghum plates, S/NA01760F735159

## TILLAGE EQUIPMENT

**2015 Case-IH 335VT** True Tandem vertical tillage, 28", 7-1/2" spacing, walking tandems across, 20" coulters, hyd. rolling baskets, scrapers, single pt. depth, front pivoting gauge wheels, S/NYFD080868

**2001 Sunflower 1434-29** disc, 29", 9" spacing, walking tandems, 22" discs, 3-bar coil tine harrow, S/N1434D20010105

**John Deere 960** field cultivator, 32", 10" sweeps, 6" spacing, walking tandems main frame, 3-bar harrow, S/NN00960X012593

**1998 Summers** harrow, 50', 5-bar sections, hyd. height adj., manual tie angle, S/NW0346H

**John Deere 400** rotary hoe, 30', 3 pt., rock shield, on transport, S/NN00400X093950

**Morris CP725** chisel plow, 25', 18" sweeps, 12" spacing, 3-bar harrow

**Allis Chalmers 13** chisel plow, 14', 15 shank, 2" points

**IHC 55** chisel plow, 14', 3 pt., 15 shank, 2" points

**Star Mfg tandem disc**, 8', 3 pt.

## SELF-PROPELLED SPRAYER & TIRES

**2007 John Deere 4720** self-propelled sprayer, 90' boom, 20" spacing, 3" fill, 800 gal. poly tank, John Deere brown box display, integrated AutoTrac, poly shields, hyd. tread adjust, auto air spring leveling, 5-body nozzles, RH fence row nozzle, SS eductor, 175 gal. poly mix tank, front & rear fenders, 650/65R38 tires, 2,028 hrs., S/NN04720X007229

**380/90R46** tires, off John Deere 4720 sprayer

## FERTILIZER SPREADERS

**Willmar Super 800** ground drive fertilizer spreader, single compartment, 540 PTO, S/NS800JN55148

**Shanard Clipper 560B** ground drive fertilizer spreader, 540 PTO, 12.5L-15 tires, 6-bolt rims

## SEMI TRACTOR

**2000 Mack CH613** tandem axle day cab, E7, 350 hp., Eaton Fuller 10 spd., cab & air susp., air slide 5th, diff lock, dual tanks, 162" WB, 12,000 lb. front, 36,000 lb. rear, 11R22.5 tires on steel wheels, 11,691 hrs., 310,758 miles

## BOX TRUCKS

**2007 IHC Transtar 8600** tri-axle, air lift steerable pusher, ISM Cummins, Eaton Fuller 10 spd., air susp., Unibody 21'x96"x63" steel box, double-framed, hoist, 3 pc. endgate w/grain door, roll tarp, 246" WB, low pro 22.5 tires

**1977 GMC 6000** single axle, V8 gas, 9 spd., Omaha Standard 16'x96"x64" box, hoist, silage gate w/grain door, spring susp., 192" WB, 9,00-20 tires, 33,205 miles

**1974 IHC 1600** Loadstar single axle, V8 gas, 4&2 spd., Plains Mfg. 13'x96"x36" wood box, hoist, spring susp., 175" WB, 9,00-20 tires on steel, 55,134 miles

**1948 Chevrolet Loadmaster** single axle, inline 6 cyl. gas, 4 spd. manual, 13'x96"x36" box, hoist, 160" WB, 8.25-20 tires on steel, does not run, non-roadable, no title

## HOPPER BOTTOM, FLATBED & OTHER TRAILERS

**2007 Timpte Super Hopper**, tandem axle hopper bottom, 42'x96"x66", ag hoppers, Shur-Co roll tarp, Scale-A-Matic scale, air susp., 295/75R22.5 tires on aluminum wheels

**2005 Lufkin tandem axle flatbed trailer**, 48'x102", spring ride, DataTrac Pro, hay sides, 275/80R22.5 tires

**2017 DCT 832-WT20** tandem axle 5th wheel trailer, 30'x102", 5' beavertail, 5' flat-fold ramp, 10,000 lb. axles, electric brakes, spare tire, ST235-60R16 dual tires

## HOPPER BOTTOM, FLATBED & OTHER TRAILERS

**2005 Wilson PSGN-5724T** Ranch Hand tandem axle aluminum livestock trailer, 24'x7', rear slide gate, torsion axles, mid-gate, 235/85R16 tires

## SCRAPERS

**MFS 3612** box scraper, 12', hyd. lift

**Rowse pull-type scraper**, hyd. dump, front dolly

## BLADES

**Meyerink blade**, 14', 4-way, off John Deere 9100

**Rhino 1540** blade, 6-way, 10', 3 pt., S/N20396

**John Deere blade**, 7', w/12" extensions, hyd. lift, brackets for John Deere 20-50 Series small frame tractor

## ROCKPICKERS

**Naber Rock Lift rockpicker**, 3 pt., hyd. claw

**Summers hyd. reel-type rockpicker**, 3-bat reel, hyd. dump, 11L-15 tires, 6-bolt rims

## SEED TENDER & GRAIN HANDLING EQUIPMENT

**2013 J&M 375ST** tri-axle seed tender, 18', 12" conveyor, roll tarp, Honda GX340 electric start, Avery Weigh-Tronix 640XL scale, remote, 2-5/16" ball, 235/85R16 tires, S/N1J9BB2338DF297398

**REM 2700** grain vac, hyd. drive augers, 9" discharge auger, 1000 PTO, 102 hrs., S/N2650

**Harvest International A1072** low pro swing hopper auger, 72"x10", cable lift hopper, hyd. lift, 540 PTO, S/N1958

**2011 Westfield TFX100-41** auger, 41'x10", 540 PTO, cable lift, S/N239241

**Wheatheart hyd. jump auger**, 8"

## LIVESTOCK EQUIPMENT

**John Deere 44** pull-type manure spreader, 540 PTO, single beater

**(2) SI Feeders Arrow 24** arrow front hay feeders, 24'x80", single axle, front dolly

**(2) Ranchers 13'8"x74"** bale feeders

**Sioux 10'x10'** calving pen w/hedge gate

**(2) Stur-D 8'** round bale feeders

**(3) Stur-D 13'x92"** bale feeders

**Round bale feeder**, 7', 3 pc.

**(36)** turned tire feeders

**EZ-Clean** hyd. feed bunk cleaner, 3 pt.

**Blow Hard** bunk blower, 3 pt., 1000 PTO, 1,500 gal. poly tank, used for liquid feed

## PICKUPS & AUTOMOBILE

**2009 Chevrolet Impala** LT, cloth, 3.5L V6, automatic, dual climate control, power windows, mirrors, & locks, 225/60R16 tires, 93,309 miles

**2001 Chevrolet 2500HD** LS, ext. cab, cloth, 6.0L V8 gas, automatic, 4WD, 6-1/2' box, power windows, mirrors & locks, grill guard, 111,202 miles

**1984 Chevrolet Custom** Deluxe 20, reg. cab, V8 gas, 4 spd., 4WD, 8' box, TrukMate plastic tool box, 5th wheel ball, LT235/85R16 tires, 87,346 miles

## ATVS

**2006 Honda Foreman 500FE** ATV, 4x4, manual, pin hitch, 11,780 miles, 1,505 hrs.

**1996 Honda Foreman 400** ATV, 4x4, manual, pin hitch, not running

## OTHER EQUIPMENT

**Schulte 510-15** batwing mower, 15', 1000 PTO, chain guards, laminated tires

**Schulte SDX-960** snowblower, 8', 3 pt., 2 stage, hyd. spout, 540 PTO, S/NB96000351911

**Wheatcraft High & Heavy Hitter** post pounder, Honda GX270 engine, hyd. controls, P235/75R15 tires, 6-bolt rims

**Farmhand F10** loader, 8' bucket w/3-tine grapple, John Deere 2 cyl. mounts, 540 PTO pump, 1,500 gal. poly tank, 30 gal. mix cone, Briggs & Stratton 5 hp. gas motor, Pacer Pump, 2" plumbing

**Posthole digger**, 8' & 12' auger bits, for skid steer loader

**Avery Weigh-Tronix 640** scale monitor, S/N60800466

**Asst. antique equipment**

## GERALD W. NEPODAL ESTATE | Christine Nepodal, PR

Rex Dummer at Steffes Group, 605.610.7989 or 605.789.5677,  
or Ben Hochgraber at Steffes Group, 605.305.2818 or 605.789.5677

605.789.5677 | SteffesGroup.com  
Steffes Group, Inc., 1688 Hwy 9, Larchwood, IA 51241



TERMS: \*SD SALES TAX LAWS APPLY. All items sold as is where is. Payment of cash or check must be made sale day before removal of items. Statements made auction only take precedence over all advertising. \$35 documentation fee applies to all titled vehicles. Titles will be mailed. Canadian buyers need a bank letter of credit to facilitate border transfer. Scott Steffes ND81, MN14-51, Brad Olstad MN319, MN14-70, Max Steffes ND999, MN14-031, Justin Ruth ND2019, MN14-041

